

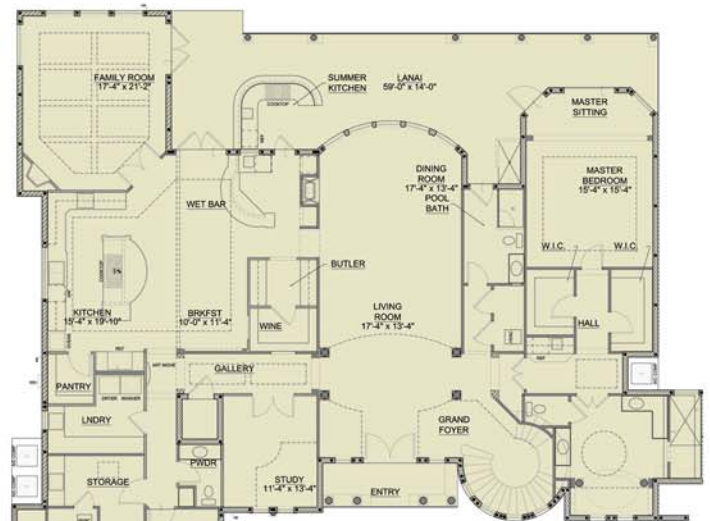


SQUARE FOOTAGES	
	SQ. FT.
1ST FLOOR	3738
2ND FLOOR (2)	1598
TOTAL LIVING	5336
GARAGE	821
COVERED PORCH	721
STORAGE	36
ENTRY	87
ENTRY BALCONY	100
BALCONY 1	758
TOTAL NON-LIVING	1765
TOTAL UNDER ROOF	7859

***Presidential Series – Plan 1***

**4 Bedrooms, 6 Baths**  
**3 Car Side-entry Garage, Covered Porch/Deck**

This home plan certainly stands up to its name – Presidential. The list of architectural features encompassing this home is too numerous to mention. As you enter through the arched double doors, you are greeted by a grand foyer, a masterful spiral staircase and living and dining room with soaring ceilings as you gaze towards a curved wall with 10 windows. Other key features include a study, family room, breakfast and wet bar, gourmet kitchen, wine cellar, butler’s pantry, summer kitchen on the lanai and a stunning master suite that runs the full length of the home. Heading up the spiral staircase you will find a bridge open to the first floor, a loft open to below and 3 more bedrooms and bathrooms. There is a balcony at the front of the house and a huge covered deck across the back of the home.



**First Floor**



**Second Floor**