



SQUARE FOOTAGES	
	SQ. FT.
1ST FLOOR	3426
2ND FLOOR	1634
TOTAL LIVING	5060
GARAGE	755
COVERED PORCH	634
ENTRY	87
ENTRY BALCONY	100
BALCONY 1	675
TOTAL NON-LIVING	1576
TOTAL UNDER ROOF	7311

Presidential Series – Plan II

4 Bedrooms, 6 Baths
3 Car Side-entry Garage, Covered Porch/Deck

With over 7,300 square feet under roof this home certainly stands up to its name – “Presidential”. The list of architectural features of this home is too numerous to mention. As you enter through the entrance with 8’ double doors, you are greeted by a grand foyer, a masterful staircase, living and dining room with soaring box beam coffered ceilings. You are captured by the multi-story glass curved wall looking out to the covered porch

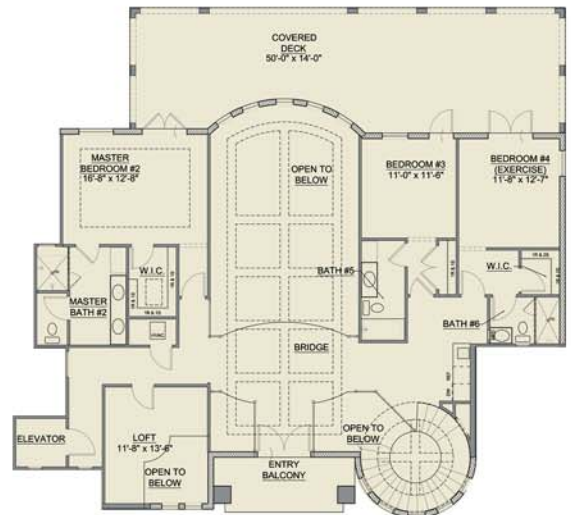
Other key features include a study, family room, breakfast, wet bar, gourmet kitchen, butler’s pantry and a summer kitchen for entertaining on the lanai. The stunning master suite runs the full length of the home and features its own wet bar. The custom circular Stair case leads to the second floor with a bridge that opens to the first floor, a loft open to below and three large bedrooms and bathrooms. There is a balcony at the front of the home and a covered deck across the back, which boasts nearly 700 square feet. The home also has a residential elevator, a three car garage, a 30kw generator back up system, Security system, lavish landscape package and brick pavers compliment the exterior of the home.

This home is built with all the energy savings material and components making it a Green home including, Impact insulated glass, foam injected walls, sprayed foam in attic and 16.00 seer Trane AC equipment. For healthier indoor air quality the builder has merv 10 air filtration, Harmony paints and many other green features.

Pick your colors, even design your pool area; it’s just waiting for you to call it home.



First Floor



Second Floor